



# Punch & Die Tooling Guide

Edition 24



**Excision<sup>®</sup>**  
Dependable Precision




## Technical Information

Excision Punch & Die tooling is produced to exacting standards and is suitable for all types of steelworkers and punching machines. Proven manufacturing techniques and a closely controlled heat treatment process guarantees optimum performance. In addition to our comprehensive range of standard stocked products we can also offer oversized tooling and design solutions for virtually any application.

## Punching Tips

- It is not recommended to punch material thicker than the diameter of the punch
- The punch size is the hole size produced
- Clearance of the die should be approximately 10% of the material thickness being punched
- The punch does most of the work and will wear quicker than the die. Life can be extended by using Excision Punch & Die Lubricant
- Alignment of punch & dies if very important, extra care is needed on pivoting punch machines
- Ensure the punch & die are securely mounted
- Make sure the stripped plate is as close to the material as practical

## Safety Tips

-  Always use eye protection
-  Always wear hand protection
-  Always make sure the power is turned off while changing tooling

**Disclaimer:** Information provided in this catalogue is current and correct at the time of publication. Products throughout the catalogue are for illustrative purposes only.



# Round or Square Die Clearance Guide

The following guide can be used as a die clearance guide when punching.

Material Thickness (mm)	Up to 4	4 - 9.5	10 - 14.5	15 - 19.5	20 - 24
Die Clearance (mm)	0.2	0.7	1.2	1.7	2.2

**Note:** When you have determined the “Die Clearance” you require, you will need to add this amount to the punch size you are using.

**Example 1:**

Punch round	Ø20mm
Material thickness	12mm
Die clearance	1.2mm
Ø20mm + 1.2mm =	21.2mm
Die required	21.2mm

**Example 2:**




Punch square	14x14mm
Material thickness	8mm
Die clearance	0.7mm
14x14mm + 0.7mm =	14.7mm
Die required	14.7x14.7mm

## Punch & Die Tooling to Suit:

- |         |            |               |           |                |
|---------|------------|---------------|-----------|----------------|
| Alfra   | Ficep      | Marksman      | Pullmax   | Suresharp      |
| Coburn  | Gairu      | Machine Maker | Punchtech | Thomas         |
| Comaco  | Geka       | Metalmaster   | QPS       | TSP (hot work) |
| Diacro  | Henry Pels | Mubea         | Rocky     | Uni-hydro      |
| Durma   | IMS        | Nitto Kohki   | Sahinler  | Valdarno       |
| Dvorak  | Isumi      | Nova Press    | Samurai   | Vitte          |
| Edwards | J.R. 65    | Omes          | Scotchman | Weidemann      |
| Enerpac | Jing Jang  | Omera         | Selfer    |                |
| Fabryka | Kippen     | Peddinghaus   | Sharp     |                |
| Fabtech | Kingsland  | Pacific       | Stanko    |                |
| Femco   | Madison    | Piranha       | Sunrise   |                |

## Punches

### Group 1

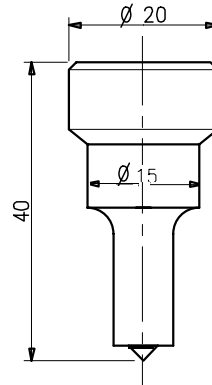
Code	24101
	3, 4, 5, 6, 7, 8, 9, 10, 11, 12, 13, 14, 15mm
	6x15, 8x15, 10x15mm
	3, 4, 5, 6, 7, 8, 9, 10mm

Matching Die: Group 1




Other shapes & sizes made to order.

Compatible to:

Mubea, Sunrise (before 2002), Metalmaster



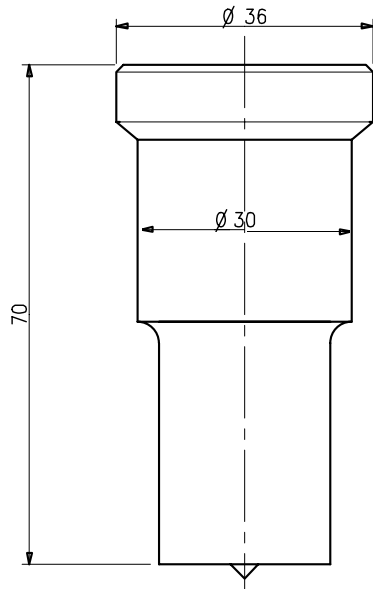
### Group 2

Code	24102
	3, 4, 5, 6, 7, 8, 9, 10, 11, 12, 13, 14, 15, 16, 17, 18, 19, 20, 21, 22, 23, 24, 25, 26, 27, 28, 29, 30mm
	6x20, 6x25, 6x30, 8x20, 8x25, 8x30, 10x20, 10x25, 10x30, 12x20, 12x25, 12x30, 14x20, 14x25, 14x30, 16x20, 16x25, 16x30, 18x25, 18x30, 20x30, 22x30, 24x30mm
	3, 4, 5, 6, 7, 8, 9, 10, 11, 12, 13, 14, 15, 16, 17, 18, 19, 20, 21mm

Matching Die: Group 2

Other shapes & sizes made to order.




Compatible to: Mubea, Sunrise (before 2002), Metalmaster, Marksman, Metalex



## Punches



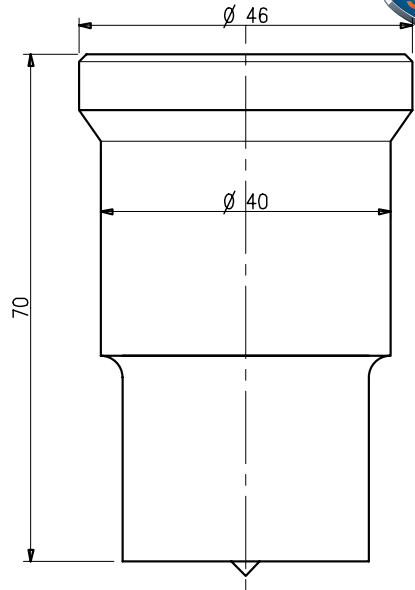
### Group 3

<b>Code</b>	<b>24103</b>
	31, 32, 33, 34, 35, 36, 37, 38, 39, 40mm
	10x38, 10x40, 12x38, 12x40, 14x38, 14x40, 15x40, 16x38, 16x40, 18x38, 18x40, 20x38, 20x40, 22x38, 22x40, 24x38, 24x40, 26x38, 26x40mm
	22, 23, 24, 25, 26, 27mm




Matching Die: No.8

Other shapes & sizes made to order.

Compatible to: Mubea, Sunrise, Metalmaster



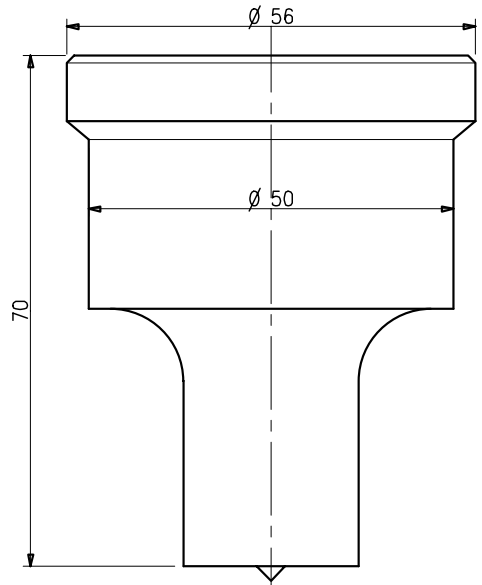
### Group 4

<b>Code</b>	<b>24104</b>
	40, 41, 42, 43, 44, 45, 46, 47, 48, 49, 50mm
	14x50, 15x50, 18x50, 22x50, 27x50, 28x50mm
	28, 29, 30, 31, 32, 33, 34, 35mm

Matching Die: Group 4




Other shapes & sizes made to order.

Compatible to: Mubea, Sunrise, Metalmaster



## Punches

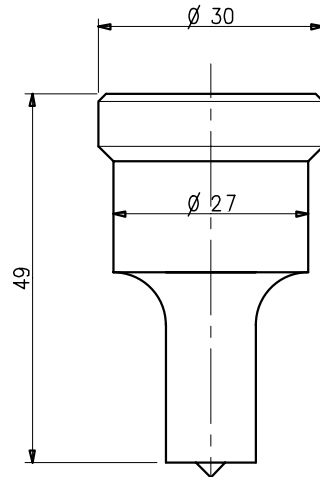
### 210/13

Code	24105
	3, 4, 5, 6, 7, 8, 9, 10, 11, 12, 13, 14, 15, 16, 17, 18, 19, 20, 21, 22, 23, 24, 25, 26, 27mm
	6x20, 6x25, 8x20, 8x25, 10x20, 10x25, 12x20, 12x25, 14x20, 14x25, 16x25, 18x25mm
	3, 4, 5, 6, 7, 8, 9, 10, 11, 12, 13, 14, 15, 16, 17, 18, 19mm




Matching Die: 210/13

Other shapes & sizes made to order.

Compatible to: Peddinghaus 210/11, 210/13, Ficep 13, Kippen



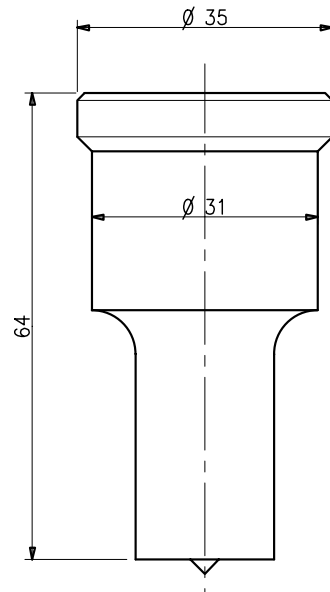
### 210/16

Code	24106
	3, 4, 5, 6, 7, 8, 9, 10, 11, 12, 13, 14, 15, 16, 17, 18, 19, 20, 21, 22, 23, 24, 25, 26, 27, 28, 29, 30, 31mm
	6x20, 6x25, 6x30, 8x20, 8x25, 8x30, 10x20, 10x25, 10x30, 12x16, 12x20, 12x25, 12x30, 13x30, 14x18, 14x20, 14x25, 14x28, 14x30, 16x25, 16x30, 18x25, 18x30, 20x30, 22x30, 24x30mm
	3, 4, 5, 6, 7, 8, 9, 10, 11, 12, 13, 14, 15, 16, 17, 18, 19, 20, 21mm

Matching Die: 210/16, 210/13, No.8

Other shapes & sizes made to order.

Compatible to: Peddinghaus 210/16, 210/20, Sunrise (after 2002), Geka 8(16), Durma, IMS, Gairu, Kingsland 9001, Scotchman



## Punches



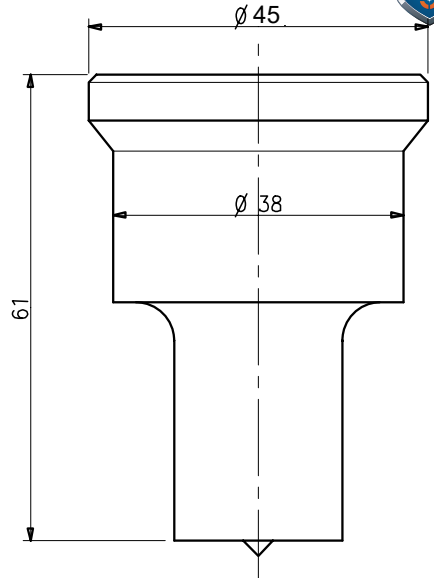
### 9004

Code	24107
	3, 4, 5, 6, 7, 8, 9, 10, 11, 12, 13, 14, 15, 16, 17, 18, 19, 20, 21, 22, 23, 24, 25, 26, 27, 28, 29, 30, 31, 32, 33, 34, 35, 36, 37, 38mm
	6x20, 6x25, 6x30, 8x20, 8x25, 8x30, 10x20, 10x25, 10x30, 10x38, 12x20, 12x25, 12x30, 12x38, 14x20, 14x25, 14x30, 14x38, 16x25, 16x30, 16x38, 18x25, 18x30, 18x38, 20x30, 20x38, 22x30, 22x38, 24x30, 24x38, 26x38mm
	3, 4, 5, 6, 7, 8, 9, 10, 11, 12, 13, 14, 15, 16, 17, 18, 19, 20, 21, 22, 23, 24, 25, 26mm

Matching Die: No.8

Other shapes & sizes made to order.

Compatible to: All Kingsland machines



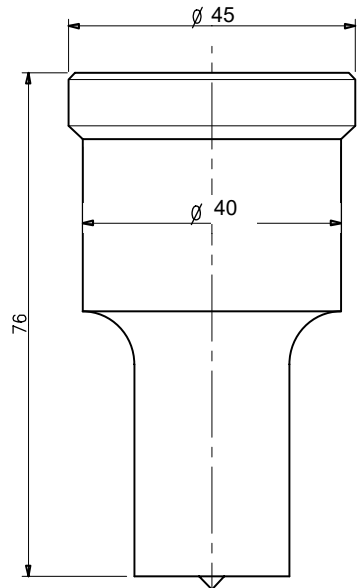
### 9006

Code	24108
	3, 4, 5, 6, 7, 8, 9, 10, 11, 12, 13, 14, 15, 16, 17, 18, 19, 20, 21, 22, 23, 24, 25, 26, 27, 28, 29, 30, 31, 32, 33, 34, 35, 36, 37, 38, 39, 40mm
	6x20, 6x25, 6x30, 8x20, 8x25, 8x30, 10x20, 10x25, 10x30, 10x38, 12x20, 12x25, 12x30, 12x38, 14x20, 14x25, 14x30, 14x38, 16x25, 16x30, 16x38, 18x25, 18x30, 18x38, 20x30, 20x38, 22x30, 22x38, 24x30, 24x38, 26x38mm
	3, 4, 5, 6, 7, 8, 9, 10, 11, 12, 13, 14, 15, 16, 17, 18, 19, 20, 21, 22, 23, 24, 25, 26mm

Matching Die: No.8




Other shapes & sizes made to order.

Compatible to: All Kingsland machines



## Punches

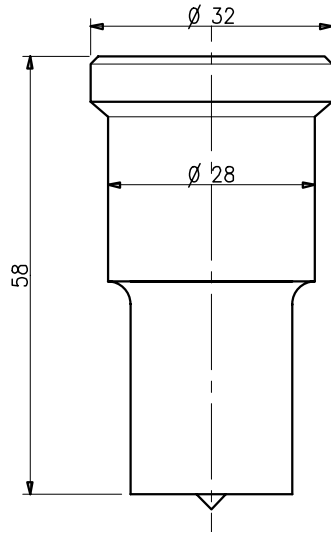
### Geka 13/6

Code	24109
	3, 4, 5, 6, 7, 8, 9, 10, 11, 12, 13, 14, 15, 16, 17, 18, 19, 20, 21, 22, 23, 24, 25, 26, 27, 28mm
	6x20, 6x25, 8x20, 8x25, 10x20, 10x25, 10x28, 12x20, 12x25, 12x28, 14x20, 14x25, 14x28, 16x20, 16x25, 16x28, 18x25, 18x28, 20x28, 22x28mm (with 6mm keyway)
	3, 4, 5, 6, 7, 8, 9, 10, 11, 12, 13, 14, 15, 16, 17, 18, 19mm (with 6mm keyway)




Matching Die: 210/13

Other shapes & sizes made to order.

Compatible to: Geka, Edwards, Piranha



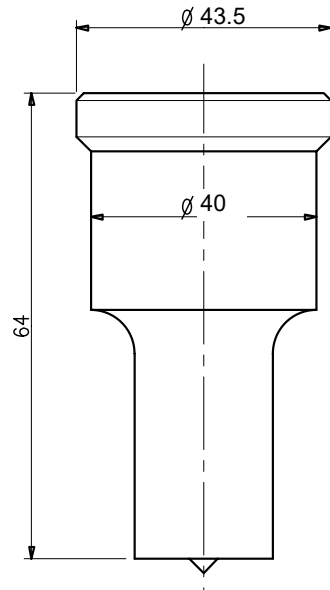
### Geka 8/40

Code	24122
	32, 33, 34, 35, 36, 37, 38, 39, 40mm
	10x38, 10x40, 12x38, 12x40, 14x38, 14x40, 16x38, 16x40, 18x38, 18x40, 20x40, 20x38, 22x38, 22x40, 24x38, 24x40, 26x38, 26x40mm
	21, 22, 23, 24, 25, 26, 27, 28mm

Matching Die: No.8

Other shapes & sizes made to order.

Compatible to: Geka, Durma





# Punches



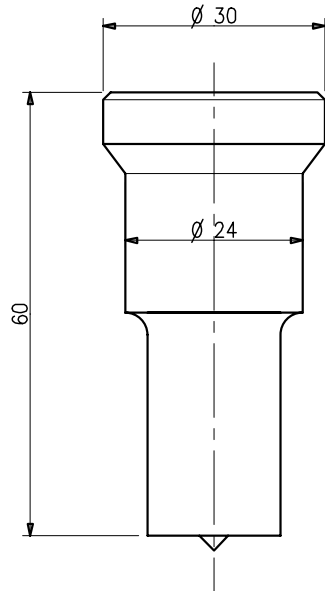
## Alfra/Nitto

Code	24110
	3, 4, 5, 6, 7, 8, 9, 10, 11, 12, 13, 14, 15, 16, 17, 18, 19, 20, 21, 22, 23, 24, 25mm
	6x20, 6x24, 8x20, 8x24, 10x20, 10x24, 12x20, 12x24, 14x20, 14x24, 16x24, 18x24mm
	3, 4, 5, 6, 7, 8, 9, 10, 11, 12, 13, 14, 15, 16mm

Matching Die: Alfra/Nitto

Other shapes & sizes made to order.

Compatible to:  
Nitto-Kohki, Selfer, Alfra






## Need a punch & die specially made?

Turn to page 21 for your custom order form



## Punches

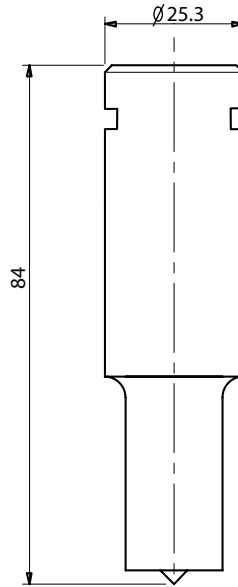
### 4014C

<b>Code</b>	<b>24123</b>
	8, 10, 12, 14, 16, 18, 22mm
	Sizes available on request up to 24mm
	Sizes available on request up to 17mm




Matching Die: 210/16

Other shapes & sizes made to order.

Compatible to: Scotchman

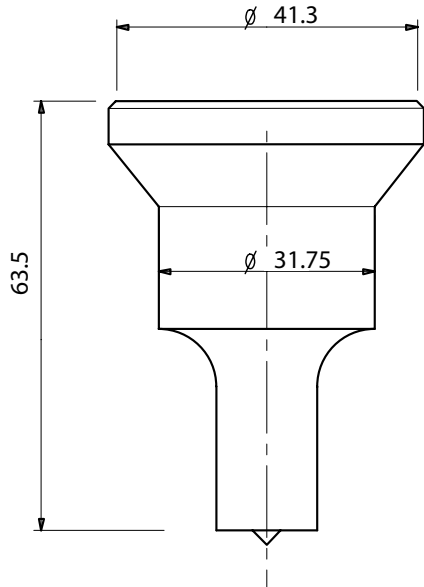


### Sharp 505N

<b>Code</b>	<b>24124</b>
	8, 10, 12, 14, 16, 18, 22mm
	Sizes available on request up to 24mm
	Sizes available on request up to 17mm

Other shapes & sizes made to order.

Compatible to: Sharp 505



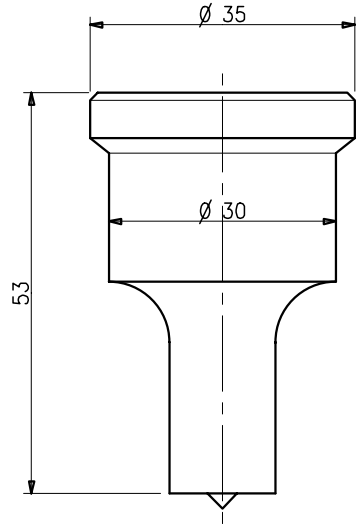
## Omera 13

Code	24111
	3, 4, 5, 6, 7, 8, 9, 10, 11, 12, 13, 14, 15, 16, 17, 18, 19, 20, 21, 22, 23, 24, 25, 26, 27, 28, 29, 30mm
	6x20, 6x25, 6x30, 8x20, 8x25, 8x30, 10x20, 10x25, 10x30, 12x20, 12x25, 12x30, 14x20, 14x25, 14x30, 16x25, 16x30, 18x25, 18x30, 20x30, 22x30, 24x30mm
	3, 4, 5, 6, 7, 8, 9, 10, 11, 12, 13, 14, 15, 16, 17, 18, 19, 20, 21mm

Matching Die: Omera 13

Other shapes & sizes made to order.

Compatible to: Omera 13, Thomas



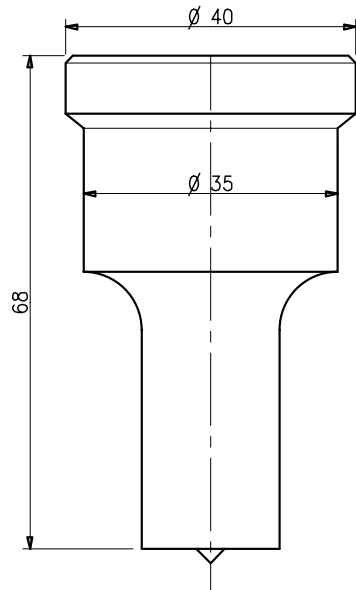
## Omera 16

Code	24112
	3, 4, 5, 6, 7, 8, 9, 10, 11, 12, 13, 14, 15, 16, 17, 18, 19, 20, 21, 22, 23, 24, 25, 26, 27, 28, 29, 30, 31, 32, 33, 34, 35mm
	6x20, 6x25, 6x30, 8x20, 8x25, 8x30, 10x20, 10x25, 10x30, 10x35, 12x20, 12x25, 12x30, 12x35, 14x20, 14x25, 14x30, 14x35, 16x25, 16x30, 16x35, 18x25, 18x30, 18x35, 20x30, 20x35, 22x30, 22x35, 24x30, 24x35, 26x35mm
	3, 4, 5, 6, 7, 8, 9, 10, 11, 12, 13, 14, 15, 16, 17, 18, 19, 20, 21, 22, 23, 24mm

Matching Die: Omera 16




Other shapes & sizes made to order.

Compatible to: Omera 16, Thomas



## Punches

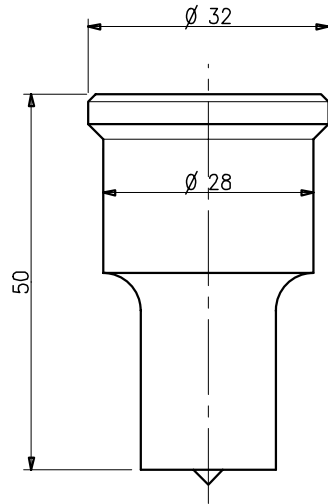
### Ficep 14

Code	24115
	3, 4, 5, 6, 7, 8, 9, 10, 11, 12, 13, 14, 15, 16, 17, 18, 19, 20, 21, 22, 23, 24, 25, 26, 27, 28mm
	6x20, 6x25, 6x28, 8x20, 8x25, 8x28, 10x20, 10x25, 10x28, 12x20, 12x25, 12x28, 14x20, 14x25, 14x28, 16x25, 16x28, 18x25, 18x28, 20x28, 22x28mm
	3, 4, 5, 6, 7, 8, 9, 10, 11, 12, 13, 14, 15, 16, 17, 18, 19mm




Matching Die: Ficep 14

Other shapes & sizes made to order.

Compatible to: Ficep



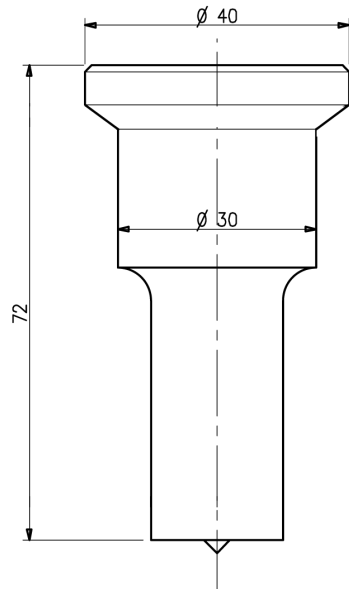
### Ficep 16

Code	24116
	3, 4, 5, 6, 7, 8, 9, 10, 11, 12, 13, 14, 15, 16, 17, 18, 19, 20, 21, 22, 23, 24, 25, 26, 27, 28, 29, 30mm
	6x20, 6x25, 6x30, 8x20, 8x25, 8x30, 10x20, 10x25, 10x30, 12x20, 12x25, 12x30, 14x20, 14x25, 14x30, 16x25, 16x30, 18x25, 18x30, 20x30, 22x30, 24x30mm
	3, 4, 5, 6, 7, 8, 9, 10, 11, 12, 13, 14, 15, 16, 17, 18, 19, 20, 21mm

Matching Die: Ficep 16

Other shapes & sizes made to order.




Compatible to: Ficep



## Punches



### 23N/8

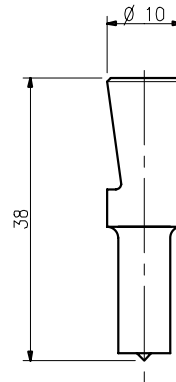
<b>Code</b>	<b>24119</b>
	2, 3, 4, 5, 6, 7, 8, 9, 10, 11, 12, 13, 14, 15, 16, 17, 18, 19, 20mm
	Oblong sizes up to 10mm made to order
	3, 4, 5, 6, 7mm

Matching Die: 23N/8




Other shapes & sizes made to order.

Compatible to:

Bramley, Ehoma P6, Mubea Hand Punch



### 22N/16

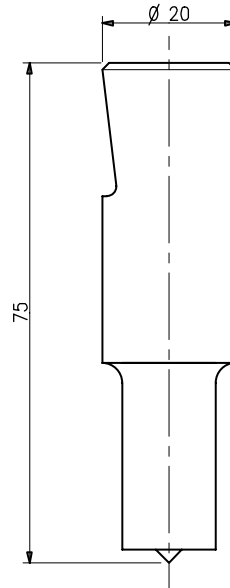
<b>Code</b>	<b>24120</b>
	3, 4, 5, 6, 7, 8, 9, 10, 11, 12, 13, 14, 15, 16, 17, 18, 19, 20mm
	Oblong sizes up to 20mm made to order
	3, 4, 5, 6, 7, 8, 9, 10, 11, 12, 13, 14mm

Matching Die: 22N/16

Other shapes & sizes made to order.




Compatible to:

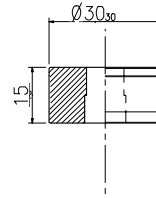
Ehoma P10, Mubea Hand Punch



## Dies

### Group 1

Code	24201
	3, 4, 5, 6, 7, 8, 9, 10, 11, 12, 13, 14, 15mm
	6x15, 8x15, 10x15mm
	3, 4, 5, 6, 7, 8, 9, 10mm






Matching Punch: Group 1

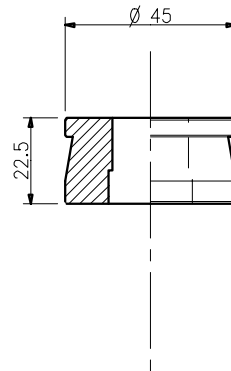
Other shapes & sizes made to order.

Compatible to:

Mubea, Sunrise, Metalmaster

### Group 2

Code	24202
	3, 4, 5, 6, 7, 8, 9, 10, 11, 12, 13, 14, 15, 16, 17, 18, 19, 20, 21, 22, 23, 24, 25, 26, 27, 28, 29, 30mm
	6x20, 6x25, 6x30, 8x20, 8x25, 8x30, 10x20, 10x25, 10x30, 12x20, 12x25, 12x30, 14x20, 14x25, 14x30, 16x20, 16x25, 16x30, 18x25, 18x30, 20x30, 22x30, 24x30mm
	3, 4, 5, 6, 7, 8, 9, 10, 11, 12, 13, 14, 15, 16, 17, 18, 19, 20, 21mm






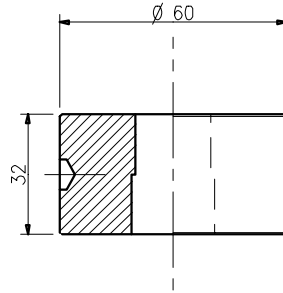
Matching Punch: Group 2

Other shapes & sizes made to order.

Compatible to: Mubea, Sunrise (before 2002), Metalmaster, Marksman

## ⊕ No. 8

Code	24221
	3, 4, 5, 6, 7, 8, 9, 10, 11, 12, 13, 14, 15, 16, 17, 18, 19, 20, 21, 22, 23, 24, 25, 26, 27, 28, 29, 30, 31, 32, 33, 34, 35, 36, 37, 38, 39, 40mm
	6x20, 6x25, 6x30, 8x20, 8x25, 8x30, 10x20, 10x25, 10x30, 10x38, 12x20, 12x25, 12x30, 12x38, 14x20, 14x25, 14x30, 14x38, 6x25, 16x30, 16x38, 18x25, 18x30, 18x38, 20x30, 20x38, 22x30, 22x38, 24x30, 24x38, 26x38mm
	3, 4, 5, 6, 7, 8, 9, 10, 11, 12, 13, 14, 15, 16, 17, 18, 19, 20, 21, 22, 23, 24, 25, 26, 27, 28mm






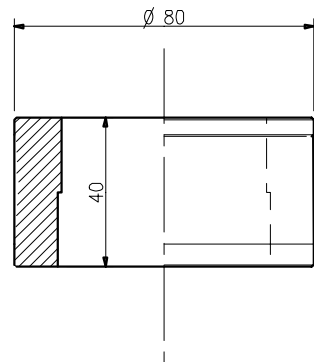
Matching Punch: Group 3, 210/16, 9004, 9006, Geka 8/40

Other shapes & sizes made to order.

Compatible to: Kingland 9024, Mubea Group 3, Marksman, Sunrise, Metalmaster, Geka, Durma

## ⊕ Group 4

Code	24204
	40, 41, 42, 43, 44, 45, 46, 47, 48, 49, 50mm
	14x50, 15x50, 18x50, 22x50, 27x50, 28x50mm
	28, 29, 30, 31, 32, 33, 34, 35mm






Matching Punch: Group 4

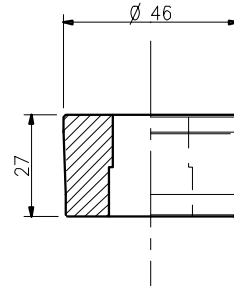
Other shapes & sizes made to order.

Compatible to:  
Mubea, Sunrise, Metalmaster

## Dies

### 210/13

Code	24205
	3, 4, 5, 6, 7, 8, 9, 10, 11, 12, 13, 14, 15, 16, 17, 18, 19, 20, 21, 22, 23, 24, 25, 26, 27, 28, 29, 30mm
	6x20, 6x25, 8x20, 8x25, 10x20, 10x25, 10x28, 10x30, 12x16, 12x20, 12x25, 12x28, 12x30, 14x20, 14x25, 14x28, 14x30, 16x25, 16x28, 18x25, 18x30, 18x28, 20x28, 20x30, 22x28, 22x30, 24x30mm
	3, 4, 5, 6, 7, 8, 9, 10, 11, 12, 13, 14, 15, 16, 17, 18, 19mm






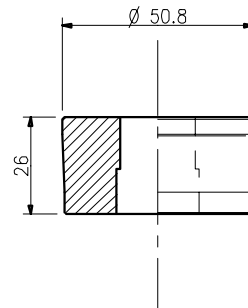
Matching Punch: 210/13, 210/16, Geka 13

Other shapes & sizes made to order.

Compatible to: Peddinghaus 210/11, 210/13, Sunrise (after 2002), Geka, Edwards, Piranha, Kippen

### 210/16

Code	24206
	3, 4, 5, 6, 7, 8, 9, 10, 11, 12, 13, 14, 15, 16, 17, 18, 19, 20, 21, 22, 23, 24, 25, 26, 27, 28, 29, 30, 31mm
	6x20, 6x25, 6x30, 8x20, 8x25, 8x30, 10x20, 10x25, 10x30, 12x20, 12x25, 12x30, 14x20, 14x25, 14x30, 16x25, 16x30, 18x25, 18x30, 20x30, 22x30, 24x30mm
	3, 4, 5, 6, 7, 8, 9, 10, 11, 12, 13, 14, 15, 16, 17, 18, 19, 20, 21, 22mm



Matching Punch: 210/16, 4014C

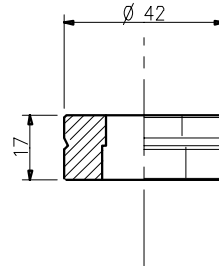
Other shapes & sizes made to order.

Compatible to: Peddinghaus 210/16, 210/20, IMS, Gairu, Scotchman



## Alfra/Nitto

Code	24210
	3, 4, 5, 6, 7, 8, 9, 10, 11, 12, 13, 14, 15, 16, 17, 18, 19, 20, 21, 22, 23, 24, 25mm
	6x20, 6x24, 8x20, 8x24, 10x20, 10x24, 12x20, 12x24, 14x20, 14x24, 16x24, 18x24mm
	3, 4, 5, 6, 7, 8, 9, 10, 11, 12, 13, 14, 15, 16mm






Matching Punch: Alfra/Nitto

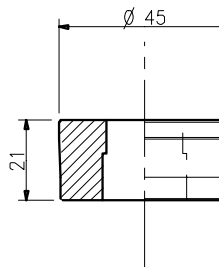
Other shapes & sizes made to order.

Compatible to:

Nitto-Kohki, Selfer, Alfra

## Omera 13

Code	24211
	3, 4, 5, 6, 7, 8, 9, 10, 11, 12, 13, 14, 15, 16, 17, 18, 19, 20, 21, 22, 23, 24, 25, 26, 27, 28, 29, 30mm
	6x20, 6x25, 6x30, 8x20, 8x25, 8x30, 10x20, 10x25, 10x30, 12x20, 12x25, 12x30, 14x20, 14x25, 14x30, 16x25, 16x30, 18x25, 18x30, 20x30, 22x30, 24x30mm
	3, 4, 5, 6, 7, 8, 9, 10, 11, 12, 13, 14, 15, 16, 17, 18, 19, 20, 21mm






Matching Punch: Omera 13

Other shapes & sizes made to order.

Compatible to: Omera 13, Thomas

## Dies

### Omera 16




Code	24212
	3, 4, 5, 6, 7, 8, 9, 10, 11, 12, 13, 14, 15, 16, 17, 18, 19, 20, 21, 22, 23, 24, 25, 26, 27, 28, 29, 30, 31, 32, 33, 34, 35mm
	6x20, 6x25, 6x30, 8x20, 8x25, 8x30, 10x20, 10x25, 10x30, 10x35, 12x20, 12x25, 12x30, 12x35, 14x20, 14x25, 14x30, 14x35, 16x25, 16x30, 16x35, 18x25, 18x30, 18x35, 20x30, 20x35, 22x30, 22x35, 24x30, 24x35, 26x35mm
	3, 4, 5, 6, 7, 8, 9, 10, 11, 12, 13, 14, 15, 16, 17, 18, 19, 20, 21, 22, 23, 24mm

Matching Punch: Omera 16

Other shapes & sizes made to order.

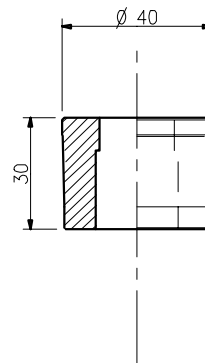
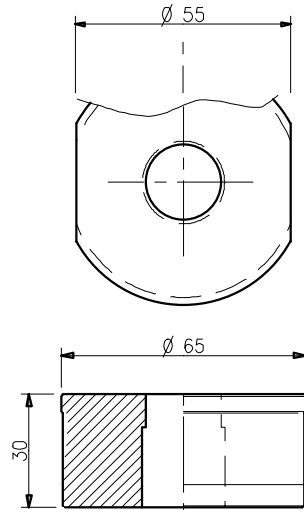
Compatible to: Omera 16, Thomas

### Ficep 13

Code	24214
	3, 4, 5, 6, 7, 8, 9, 10, 11, 12, 13, 14, 15, 16, 17, 18, 19, 20, 21, 22, 23, 24, 25, 26, 27mm
	6x20, 6x25, 8x20, 8x25, 10x20, 10x25, 12x20, 12x25, 14x20, 14x25, 16x25, 18x25mm
	3, 4, 5, 6, 7, 8, 9, 10, 11, 12, 13, 14, 15, 16, 17, 18, 19mm

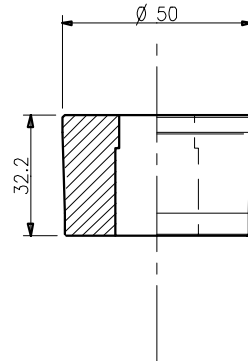
Other shapes & sizes made to order.

Compatible to: Ficep



## Ficep 14

Code	24215
	3, 4, 5, 6, 7, 8, 9, 10, 11, 12, 13, 14, 15, 16, 17, 18, 19, 20, 21, 22, 23, 24, 25, 26, 27, 28mm
	6x20, 6x25, 6x28, 8x20, 8x25, 8x28, 10x20, 10x25, 10x28, 12x20, 12x25, 12x28, 14x20, 14x25, 14x28, 16x25, 16x28, 18x25, 18x28, 20x28, 22x28mm
	3, 4, 5, 6, 7, 8, 9, 10, 11, 12, 13, 14, 15, 16, 17, 18, 19mm

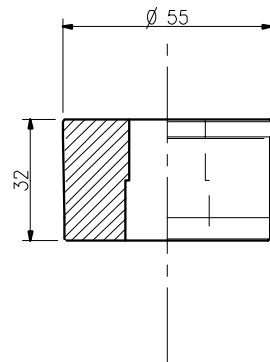


Other shapes & sizes made to order.

Compatible to: Ficep

## Ficep 16

Code	24216
	3, 4, 5, 6, 7, 8, 9, 10, 11, 12, 13, 14, 15, 16, 17, 18, 19, 20, 21, 22, 23, 24, 25, 26, 27, 28, 29, 30mm
	6x20, 6x25, 6x30, 8x20, 8x25, 8x30, 10x20, 10x25, 10x30, 12x20, 12x25, 12x30, 14x20, 14x25, 14x30, 16x25, 16x30, 18x25, 18x30, 20x30, 22x30, 24x30mm
	3, 4, 5, 6, 7, 8, 9, 10, 11, 12, 13, 14, 15, 16, 17, 18, 19, 20, 21mm






Matching Punch: Ficep 16

Other shapes & sizes made to order.

Compatible to: Ficep

## Dies

### 23N/8

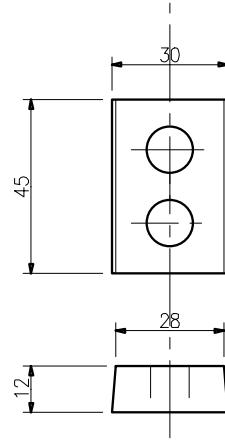
<b>Code</b>	<b>24219</b>
	2, 3, 4, 5, 6, 7, 8, 9, 10, 11, 12, 13, 14, 15, 16, 17, 18, 19, 20mm
	Oblong sizes up to 10mm made to order
	3, 4, 5, 6, 7mm

Matching Punch: 23N/8




Other shapes & sizes made to order.

Compatible to:

Bramley, Ehoma, Mubea Hand Punch



### 22N/16

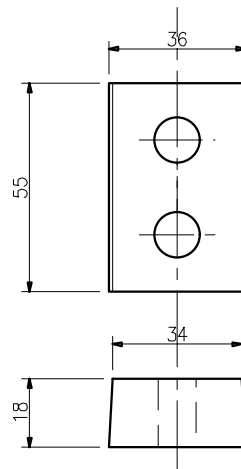
<b>Code</b>	<b>24220</b>
	3, 4, 5, 6, 7, 8, 9, 10, 11, 12, 13, 14, 15, 16, 17, 18, 19, 20mm
	Oblong sizes up to 20mm made to order
	3, 4, 5, 6, 7, 8, 9, 10, 11, 12, 13, 14mm

Matching Punch: 22N/16

Other shapes & sizes made to order.

Compatible to:

Ehoma, Mubea Hand Punch

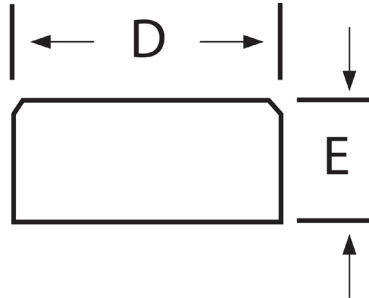
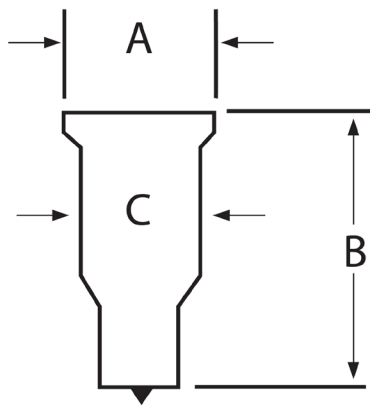


# Custom Size Form

Please Complete & Return

Company Name	
Address	
Telephone	
Email	
Contact Person	
Machine Type & Model	

Size of Punch & Dies Required	
-------------------------------	--



A	
B	
C	

D	
E	

Dimensions in mm.

## Can't find what you're looking for?



Give our friendly team a call on +61 3 5551 4555



# Excision®

Dependable Precision



+61 3 5551 4555



info@excision.com.au



excision.com.au

**Your Distributor**