

Description

The Alemlube Automotive AA101P single post hoist operates with a hydraulic cylinder lifting mechanism and has a lifting capacity of 1,000kg making it suitable to lift a wide range of all terrain vehicles, ride-on mowers, small tractors, golf carts, mobility scooters and light vehicles not exceeding a safe working load of 1,000kg.

Features

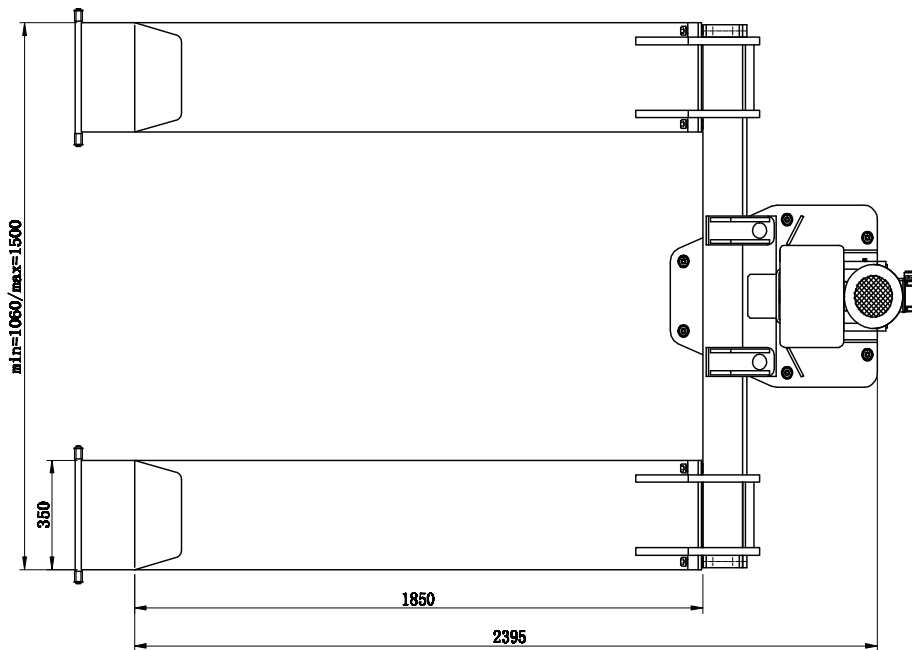
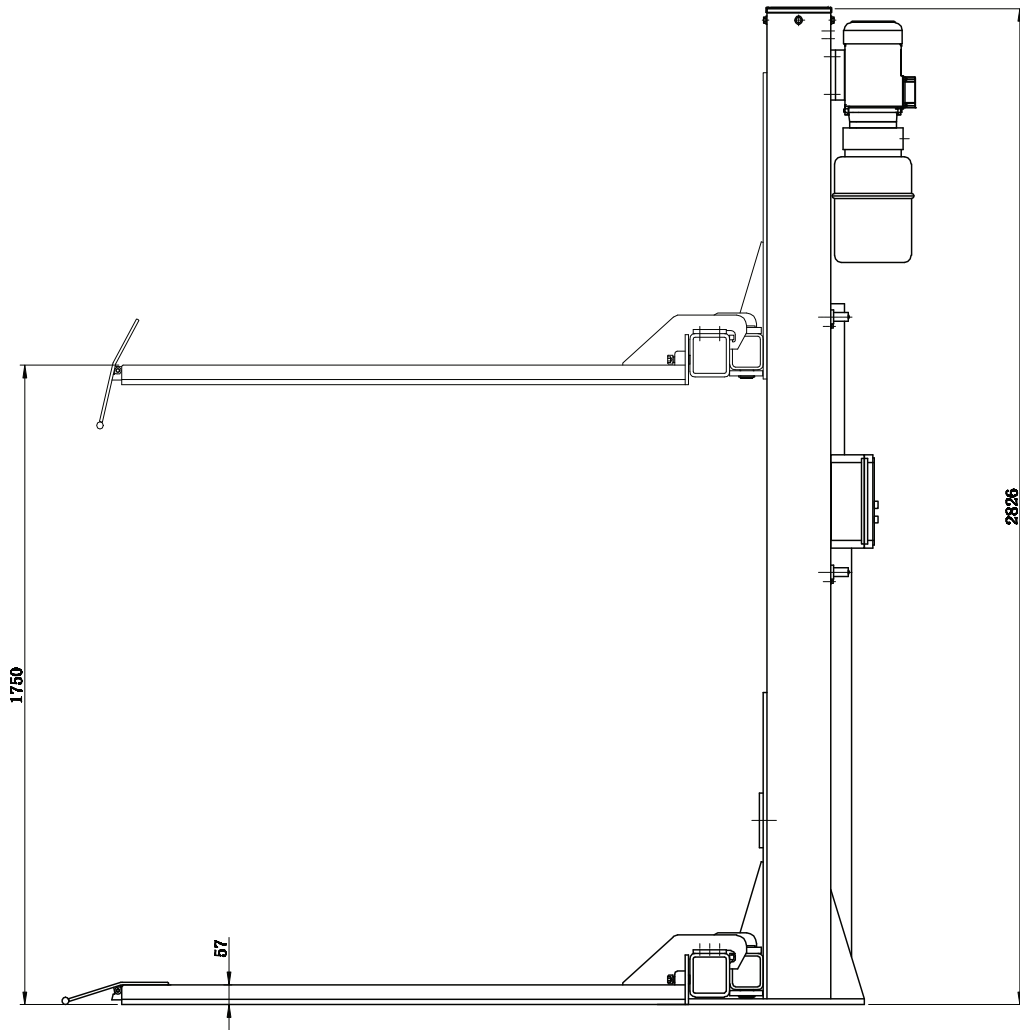
- Load capacity of 1,000kg
- 240V single phase power supply
- Hydraulic cylinder lifting mechanism
- Two safety electromagnetic locking devices installed in the column
- Rise time of 50 seconds
- Two speed descending time of 20 seconds / 40 seconds
- Max. lift height: 1750mm
- Each platform measures 350mm wide
- Platform length of 1,850mm with ramps 2010mm
- Max. platforms adjustable width setting: 1500mm
- Min. platforms adjustable width setting: 960mm
- Overall hoist height: 2726mm
- Overall hoist length: 2570mm
- Weight: 500kg

Warning

This Owner's Manual is an important part of the product. Please read and understand it thoroughly. Keep this manual for future use. Do not use this lift for any other purpose. The manufacturer is not responsible for any damage caused by improper use other than the designed purpose.



AA101P Dimensions



NSW/ACT
TEL: (02) 9677 1555
FAX: (02) 9675 1155

QLD/PNG
TEL: (07) 3204 9166
FAX: (07) 3204 1224

VIC/TAS
TEL: (03) 8787 8288
FAX: (03) 8787 8266

WA
TEL: (08) 9302 4199
FAX: (08) 9303 2095

SA/NT
TEL: (08) 8241 7111
FAX: (08) 8241 7011

NZ
TEL: (64) 9 447 1007
FAX: (64) 9 447 1008

AA101P Main Structural Principle

The lifting mechanism:

The column is installed with a hydraulic cylinder.

When hydraulic oil is pressed from the power pack into the lower chamber of the cylinder, the piston rod moves upward and the lift rises.

The load supporting mechanism:

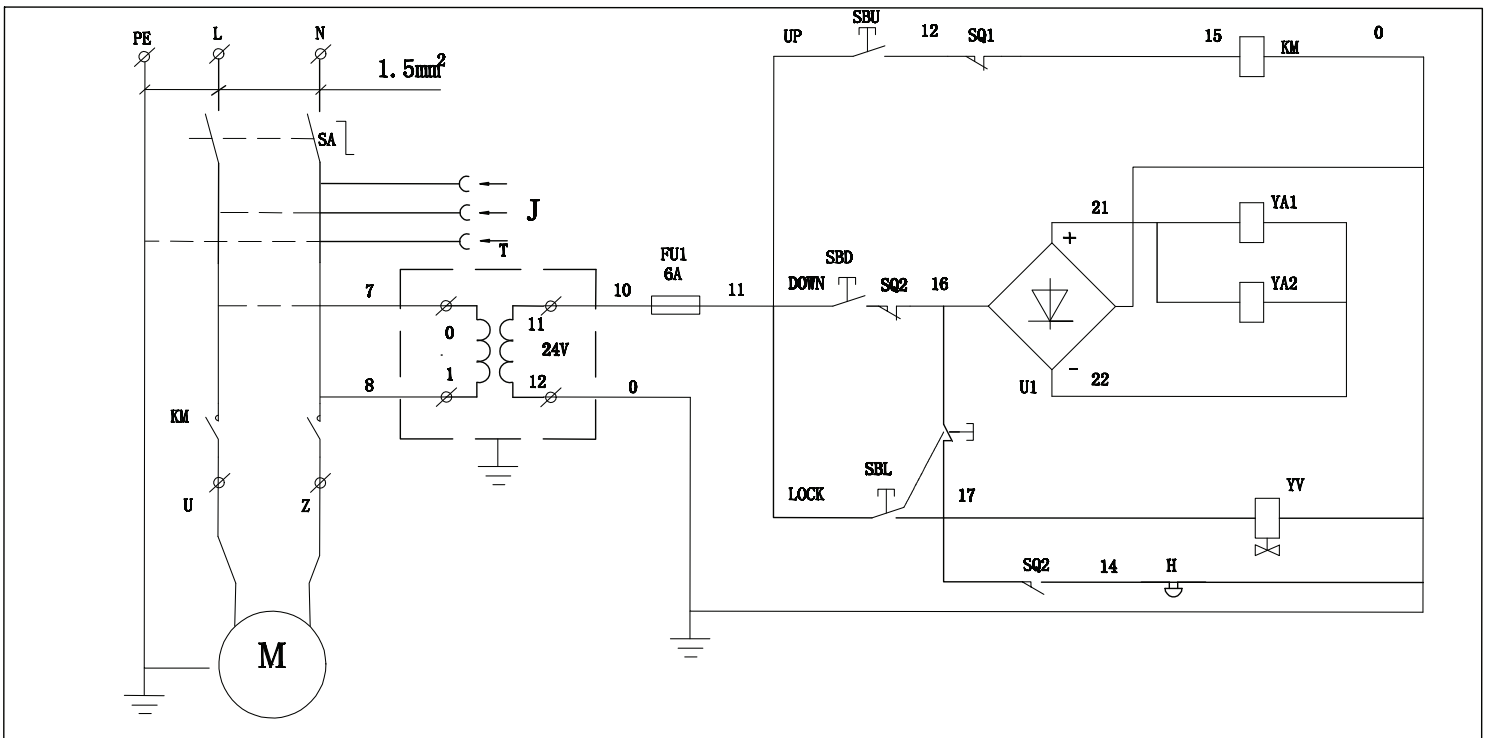
As a vehicle enters the working area, adjust the angle and telescopic length of the platform, then adjust the height of the screw below the pads to adapt to the vehicle's chassis dimensions.

The electromagnet locking mechanism:

Two safety locking devices are installed in the column. In the process of lifting the automatic locking devices ensure reliable operation and safety.

The safety locking mechanism is effective when the front ends of the platforms are from 450mm to 1800mm above the floor.

AA101P Electrical Circuit / Wiring Diagram



YV	Solenoid Vavle
VC	DC Rectifier
YA1, YA2	Electromagnet
SQ2	Chain Slack switch
SQ1	Top limit switch
SB3	LOCK button
SB2	DOWN button
SB1	UP button
FU	Fuse
T	Transformer
M	Pump Motor
KM	Contactor
QS	Power Switch

NSW/ACT

TEL: (02) 9677 1555
FAX: (02) 9675 1155

QLD/PNG

TEL: (07) 3204 9166
FAX: (07) 3204 1224

VIC/TAS

TEL: (03) 8787 8288
FAX: (03) 8787 8266

WA

TEL: (08) 9302 4199
FAX: (08) 9303 2095

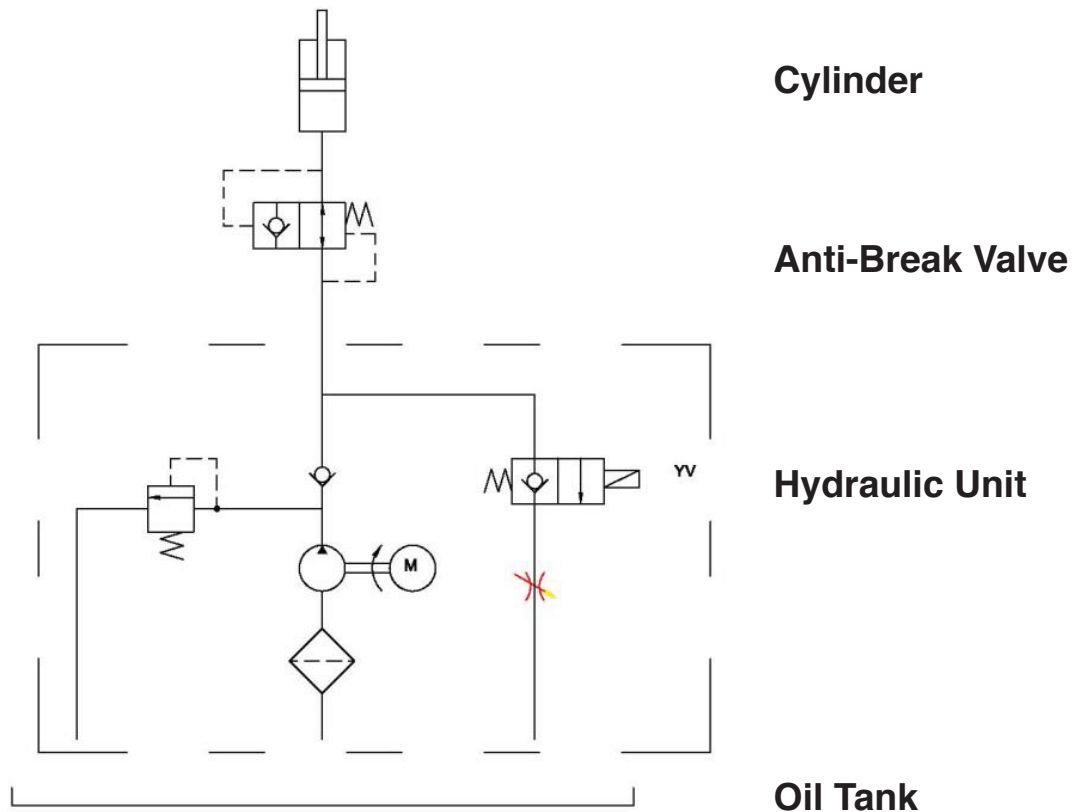
SA/NT

TEL: (08) 8241 7111
FAX: (08) 8241 7011

NZ

TEL: (64) 9 447 1007
FAX: (64) 9 447 1008

AA101P Hydraulic Circuit Diagram



NSW/ACT
TEL: (02) 9677 1555
FAX: (02) 9675 1155

QLD/PNG
TEL: (07) 3204 9166
FAX: (07) 3204 1224

VIC/TAS
TEL: (03) 8787 8288
FAX: (03) 8787 8266

WA
TEL: (08) 9302 4199
FAX: (08) 9303 2095

SA/NT
TEL: (08) 8241 7111
FAX: (08) 8241 7011

NZ
TEL: (64) 9 447 1007
FAX: (64) 9 447 1008

Attention!

Only well trained personnel can operate the AA101P lift. Any changes to the components or use for other purposes without the consent of the manufacturer may cause direct or indirect damage to the lift or personal harm.

Do not expose the lift to extreme temperatures or humidity. Keep lift away from heating devices, taps, humidifiers or furnaces.

Operating temperature: -5°C to +40°C

Relative temperature: +30°C

Relative humidity: 80°C

Transport/storage temperature: -5°C to +40°C

Proper altitude: not more than 2000m

Do not install the lift outdoors or exposed to the rain.

Keep the lift away from dust, ammonia, alcohol, thinners and spray adhesive.

Keep away from the lift when it is operating.

Inspection of the lift should be carried out regularly. Do not operate a damaged lift or a lift with broken parts. All parts are only replaceable with parts provided by Alemlube.

Do not overload the lift. The maximum lifting weight is clearly marked on the name plate.

Max. lifting capacity 1,000kg.

Do not operate the lift when there are personnel in the vehicle.

Keep the lifting area clear of obstacles, grease, waste oil and other substances.

Use the lifting point recommended by the auto manufacturer. Keep the support in close contact with the vehicle.

Use appropriate tools and safety protection equipment such as overalls and working boots.

Pay special attention to safety labels on the control desk.

Keeps hands and other body parts away from moving parts of the lift in operation. Do not remove or override safety protection devices of the lift. Hydraulic oil for the lift is N32 or N46 mechanical oil.

For the sake of technical improvements we reserve the right to change the specifications without prior notice.

NSW/ACT

TEL: (02) 9677 1555

FAX: (02) 9675 1155

QLD/PNG

TEL: (07) 3204 9166

FAX: (07) 3204 1224

VIC/TAS

TEL: (03) 8787 8288

FAX: (03) 8787 8266

WA

TEL: (08) 9302 4199

FAX: (08) 9303 2095

SA/NT

TEL: (08) 8241 7111

FAX: (08) 8241 7011

NZ

TEL: (64) 9 447 1007

FAX: (64) 9 447 1008

AA101P User Manual Trouble Shooting

Problem	Possible Reason	Solution
The motor does not run	<ul style="list-style-type: none"> • Incorrect connection to the power supply • Fuse is faulty • Limit switch has a burnt wire • Motor has a burnt wire 	<p>Provide correct power supply</p> <p>Replace faulty fuse Replace limit switch Replace motor</p>
The motor runs but the lift will not rise	<ul style="list-style-type: none"> • Motor rotating in reverse • The lowering valve is open • Air in the hydraulic pump • Short air intake pipe disconnects from the hydraulic pump • Low oil level 	<p>Change the direction of rotation by changing the wiring connection of the motor</p> <p>Repair or replace the lowering valve Fasten all fittings for the air intake pipe Replace short air intake pipe Add oil to the oil tank</p>
The motor runs but the lift only rises without load, will not lift with vehicle	<ul style="list-style-type: none"> • Voltage is too low • Impurities in the lowering valve • The regulation pressure of the safety valve is incorrect • The lift is overloaded 	<p>Connect correct voltage to the motor Remove impurities in the lowering valve Adjust the pressure of the safety valve</p> <p>Check weight of the vehicle</p>
The lift lowers very slowly without pressing the lowering valve	<ul style="list-style-type: none"> • Impurities in the lowering valve • There is an external leakage 	<p>Clean lowering valve Repair or replace components or fittings that are leaking</p>
The lift rises slowly or oil leaking from oil cap	<ul style="list-style-type: none"> • Air is mixed with hydraulic oil • Air intake is mixed with oil intake • Oil return pipe is loose 	<p>Replace hydraulic oil Fasten all fittings for the air intake pipe</p> <p>Re-install oil return pipe</p>
The lift will not rise horizontally	<ul style="list-style-type: none"> • Synchronisation steel cable is not adjusted properly • Lift is not installed on level ground 	<p>Adjust the tension of the synchronisation steel cable Install the lift on a level floor, level should not exceed 5mm If ground exceeds level, excavate and concrete to meet level required</p>
Anchor bolts do not tighten	<ul style="list-style-type: none"> • The holes are drilled to large • The thickness and fastening force of the concrete floor is not suitable 	<p>Fill over-sized holes and re-drill correctly or move lift and re-drill correct size holes Excavate floor and create new concrete</p>

Always refer to the manufacturer's installation instructions

NSW/ACT

TEL: (02) 9677 1555
FAX: (02) 9675 1155

QLD/PNG

TEL: (07) 3204 9166
FAX: (07) 3204 1224

VIC/TAS

TEL: (03) 8787 8288
FAX: (03) 8787 8266

WA

TEL: (08) 9302 4199
FAX: (08) 9303 2095

SA/NT

TEL: (08) 8241 7111
FAX: (08) 8241 7011

NZ

TEL: (64) 9 447 1007
FAX: (64) 9 447 1008