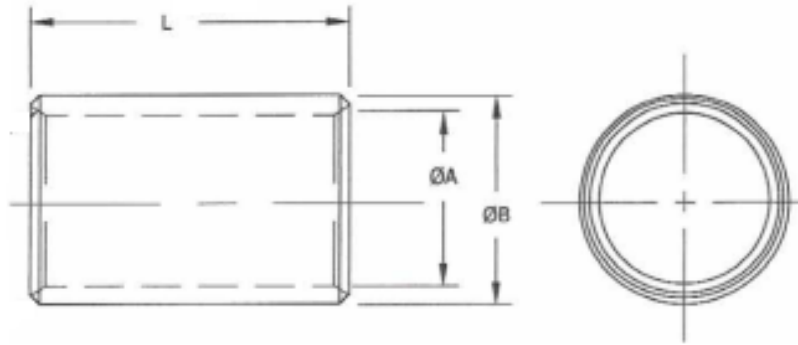


Bronze Bushes (Inch)



"Australia's Only Genuine Wholesaler"



Part No.	Inside Diameter (A) (Inch)	Outside Diameter (B) (Inch)	Width (L) (Inch)	Weight (Kg)	Part No.	Inside Diameter (A) (Inch)	Outside Diameter (B) (Inch)	Width (L) (Inch)	Weight (Kg)	Part No.	Inside Diameter (A) (Inch)	Outside Diameter (B) (Inch)	Width (L) (Inch)	Weight (Kg)
FB0001	5/16	7/16	1/2	0.0054	FB1060	2-1/4	2-3/4	2-1/2	0.7134	FB0319	5/8	13/16	2-1/2	0.0769
FB0010	3/8	1/2	3/4	0.0094	FB1061	2-1/4	2-3/4	3	0.8651	FB0332	7/16	11/16	2	0.0642
FB0100	1/2	9/16	1-1/2	0.0114	FB1062	2-1/4	2-3/4	3-1/2	0.9987	FB0322	5/8	7/8	1	0.0428
FB0521	3/4	15/16	3		FB1063	2-1/4	2-3/4	4	1.1414	FB0325	5/8	7/8	1-1/2	0.0642
FB0716	7/8	1-1/16	3		FB0107	1/2	11/16	1	0.0254	FB0328	5/8	7/8	2	0.0856
FB1001	1-1/4	1-3/8	3	0.1124	FB1073	2-1/2	3	4	1.2555	FB0329	5/8	7/8	2-1/4	0.0963
FB1002	1-1/4	1-1/2	1-3/4	0.1373	FB0011	3/8	1/2	1	0.0125	FB0330	5/8	7/8	2-1/2	0.107
FB1003	1-1/4	1-1/2	2	0.1569	FB0112	1/2	11/16	2	0.0508	FB0331	5/8	7/8	3	0.1284
FB1004	1-1/4	1-1/2	2-1/2	0.1962	FB0113	1/2	3/4	1	0.0357	FB0335	5/8	1	2	0.1391
FB1005	1-1/4	1-1/2	3	0.2354	FB0115	1/2	3/4	1-1/2	0.0535	FB0337	5/8	1	2-1/2	0.1739
FB1007	1-1/4	1-1/2	3-1/2	0.2477	FB0116	1/2	3/4	1-3/4	0.0624	FB0036	7/16	5/8	1	0.0227
FB1008	1-1/4	1-1/2	4	0.3139	FB0117	1/2	3/4	2	0.0173	FB0039	7/16	11/16	1	0.0321
FB1009	1-1/4	1-5/8	1-3/4	0.2154	FB0119	1/2	3/4	2-1/2	0.0892	FB0004	5/16	7/16	1	0.0107
FB1010	1-3/8	1-5/8	2	0.1712	FB0012	3/8	1/2	2	0.025	FB0403	11/16	13/16	2	0.0428
FB1011	1-3/8	1-5/8	3	0.2568	FB0121	1/2	7/8	2	0.1177	FB0409	11/16	7/8	2	0.0669
FB1012	1-3/8	1-3/4	4	0.535	FB0122	1/2	1	2	0.1712	FB0502	3/4	7/8	1	0.0232
FB1013	1-1/2	1-5/8	2	0.0892	FB0013	3/8	1/2	1-1/2	0.0187	FB0505	3/4	7/8	1-1/2	0.0348
FB1014	1-1/2	1-3/4	2-1/2	0.2318	FB0002	5/16	7/16	1-1/2	0.0054	FB0507	3/4	7/8	2	0.0464
FB1015	1-1/2	1-3/4	3-1/2	0.2782	FB0020	7/16	9/16	1	0.0143	FB0510	3/4	7/8	2-1/2	0.058
FB1017	1-1/2	1-3/4	4	0.371	FB0203	9/16	11/16	1-1/2	0.0288	FB0515	3/4	15/16	1-1/2	0.0542
FB1018	1-3/4	2-1/8	4	0.6634	FB0207	9/16	11/16	2	0.0357	FB0520	3/4	15/16	2-1/2	0.0903
FB1019	2	2-1/4	3-1/2	0.4245	FB0216	9/16	3/4	1-3/4	0.0492	FB0522	3/4	1	1	0.0499
FB0102	1/2	5/8	1	0.0161	FB0217	9/16	3/4	2	0.0562	FB0523	3/4	1	1-1/4	0.0624
FB1020	1-1/2	2	2-1/2	0.4994	FB0219	9/16	3/4	2-1/4	0.0632	FB0524	3/4	1	1-1/2	0.0749
FB1021	1-1/2	2	3	0.5992	FB0220	9/16	3/4	2-1/2	0.0702	FB0525	3/4	1	1-3/4	0.0874
FB1022	1-1/2	2	3-1/2	0.6991	FB0224	9/16	13/16	2	0.0785	FB0526	3/4	1	2	0.0999
FB1023	1-1/2	2	4	0.799	FB0228	9/16	7/8	2	0.1025	FB0528	3/4	1	2-1/4	0.1124
FB0103	1/2	5/8	1-1/4	0.0201	FB0025	7/16	9/16	2	0.0285	FB0529	3/4	1	2-1/2	0.1248
FB1030	1-3/4	2	2-1/2	0.2675	FB0027	7/16	5/8	1-1/2	0.0341	FB0530	3/4	1	3	0.1498
FB1031	1-3/4	2	3	0.321	FB0029	7/16	5/8	2	0.0455	FB0531	3/4	1-1/16	2	0.1293
FB1033	1-3/4	2	4	0.4276	FB0003	5/16	7/16	3/4	0.008	FB0533	3/4	1-1/8	1-1/2	0.1204
FB1037	1-3/4	2-1/4	3	0.6848	FB0301	5/8	11/16	1-1/2	0.0145	FB0536	3/4	1-1/8	2-1/2	0.2006
FB1038	1-3/4	2-1/4	3-1/2	0.799	FB0302	5/8	11/16	2	0.0187	FB0537	3/4	1-1/8	3	0.2408
FB1039	1-3/4	2-1/2	4	1.4553	FB0303	5/8	3/4	3/4	0.0147	FB0538	3/4	1-1/4	2-1/2	0.2854
FB0104	1/2	5/8	1-1/2	0.0241	FB0304	5/8	3/4	1	0.0196	FB0603	13/16	15/16	2	0.0499
FB1040	2	2-1/4	2-1/2	0.3032	FB0305	5/8	3/4	1-1/4	0.0245	FB0606	13/16	1	2	0.0776
FB1050	2	2-1/2	2-1/2	0.642	FB0308	5/8	3/4	1-3/4	0.0343	FB0608	13/16	1-1/16	2	0.107
FB1051	2	2-1/2	3	0.7704	FB0309	5/8	3/4	2	0.0392	FB0610	13/16	1-1/16	2-1/2	0.1338
FB1052	2	2-1/2	3-1/2	0.8989	FB0311	5/8	3/4	2-1/2	0.049	FB0612	13/16	1-1/16	3	0.1605
FB1053	2	2-1/2	4	1.0273	FB0312	5/8	3/4	3	0.0589	FB0702	7/8	1	1-1/4	0.0334
FB0106	1/2	5/8	2	0.0321	FB0317	5/8	13/16	2	0.0615	FB0703	7/8	1	1-1/2	0.0401

Finer Power Transmissions P/L | www.finerpt.com

Bronze Bushes

Part No.	Inside Diameter (A)	Outside Diameter (B)	Width (L)	Weight	Part No.	Inside Diameter (A)	Outside Diameter (B)	Width (L)	Weight	Part No.	Inside Diameter (A)	Outside Diameter (B)	Width (L)	Weight
	(Inch)	(Inch)	(Inch)	(Kg)		(Inch)	(Inch)	(Inch)	(Kg)		(Inch)	(Inch)	(Inch)	(Kg)
FB0705	7/8	1	2	0.0535	FB0813	1	1-1/4	1-1/4	0.0825	FB0101	1/2	5/8	3/4	0.012
FB0707	7/8	1	2-1/2	0.0669	FB0814	1	1-1/4	1-1/2	0.0963	FB1032	1-3/4	2	3-1/2	0.3745
FB0708	7/8	1	3	0.0803	FB0815	1	1-1/4	1-3/4	0.1124	FB1041	2	2-1/4	3	0.3638
FB0713	7/8	1-1/16	2	0.0829	FB0816	1	1-1/4	2	0.1284	FB1071	2-1/2	3	3	0.9417
FB0715	7/8	1-1/16	2-1/2	0.1037	FB0818	1	1-1/4	2-1/2	0.1605	FB0019	7/16	9/16	3/4	0.0107
FB0718	7/8	1-1/8	1-1/2	0.0856	FB0820	1	1-1/4	3	0.1926	FB0232	9/16	1	2	0.1561
FB0720	7/8	1-1/8	2	0.1141	FB0821	1	1-1/4	3-1/2	0.2247	FB0236	9/16	13/16	1	0.0392
FB0723	7/8	1-1/8	3	0.1712	FB0822	1	1-1/4	4	0.2568	FB0307	5/8	3/4	1-1/2	0.0294
FB0726	7/8	1-1/4	2	0.1819	FB0823	1	1-3/8	2	0.2033	FB0415	11/16	15/16	2	0.0927
FB0728	7/8	1-1/4	2-1/2	0.2274	FB0824	1	1-3/8	2-1/2	0.2541	FB0418	11/16	1	2	0.1204
FB0729	7/8	1-1/4	3	0.2729	FB0825	1	1-3/8	3	0.305	FB0490	3/4	1	3/4	0.0375
FB0730	7/8	1-3/8	3	0.3852	FB0900	1-1/8	1-1/4	1-1/2	0.0509	FB0500	3/4	13/16	1-1/2	0.0671
FB0731	15/16	1-1/16	1-1/2	0.0428	FB0901	1-1/8	1-1/4	2	0.0678	FB0501	3/4	7/8	3/4	0.0174
FB0736	15/16	1-1/8	3	0.1324	FB0902	1-1/8	1-1/4	2-1/2	0.0847	FB0504	3/4	7/8	1-1/4	0.029
FB0738	15/16	1-3/16	2	0.1213	FB0903	1-1/8	1-1/4	3	0.1017	FB0532	3/4	1-1/16	2-1/2	0.1616
FB0800	1	1-1/16	1-1/2	0.0221	FB0904	1-1/8	1-3/8	2	0.1427	FB0534	3/4	1-1/8	2	0.1605
FB0801	1	1-1/8	1	0.0303	FB0906	1-1/8	1-3/8	3	0.214	FB0602	13/16	15/16	1-1/2	0.0375
FB0802	1	1-1/8	1-1/4	0.0379	FB0908	1-1/8	1-3/8	4	0.2854	FB0607	13/16	1	2-1/2	0.097
FB0803	1	1-1/8	1-1/2	0.0455	FB0909	1-1/8	1-1/2	3	0.3371	FB0722	7/8	1-1/8	2-1/2	0.1427
FB0805	1	1-1/8	2	0.0606	FB0912	1-1/4	1-1/2	1	0.0785	FB0734	15/16	1-1/8	1-1/4	0.0552
FB0807	1	1-1/8	3	0.091	FB0913	1-1/4	1-1/2	1-1/4		FB0910	1-3/8	1-5/8	4	0.3424
FB0810	1	1-3/16	2-1/2	0.117	FB0914	1-1/4	1-1/2	1-1/2	0.1177	FB0099	1/2	3/4	3/4	0.0268
FB0811	1	1-1/4	1	0.0642	FB0996	1-1/2	1-3/4	1-1/2	0.1391					
FB0812	1	1-1/4	1-1/8	0.0722	FB0998	1-1/2	1-3/4	2	0.1853					

