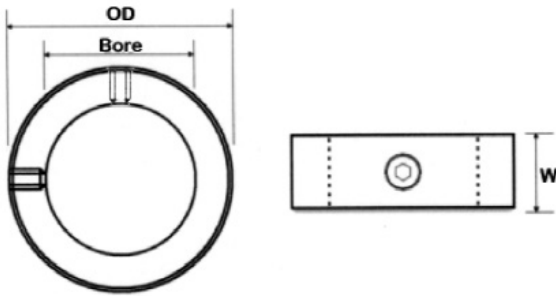


Shaft Collars (Stainless Steel)

Set screw collars are most effective when used on a shaft made of a material which is softer than the set screw.

304 Stainless Steel



Metric Shaft Collars

Part No.	Bore	O.D.	W	Screw Size	Approx Kg
SSFSC-10	10.0	20.0	10.0	M6*6	0.02
SSFSC-12	12.0	22.0	12.0	M6*6	0.03
SSFSC-16	16.0	28.0	12.0	M6*6	0.04
SSFSC-20	20.0	32.0	14.0	M6*6	0.05
SSFSC-25	25.0	40.0	16.0	M6*6	0.10
SSFSC-30	30.0	45.0	16.0	M8*8	0.15
SSFSC-35	35.0	56.0	16.0	M8*8	0.18
SSFSC-40	40.0	63.0	18.0	M10*12	0.30
SSFSC-45	45.0	70.0	18.0	M10*12	0.35
SSFSC-50	50.0	80.0	18.0	M10*12	0.40

Bore Tolerances	
Bore	Tolerances
All	+0.01mm
	0.05mm

Width Tolerance	
All	Tolerances
All	+0.08
	-0.25

Imperial Shaft Collars

Part No.	Bore	O.D.	W	Screw Size	Approx Kg
SSFSC-3/8	0.375	0.750	0.375	M6*5	0.01
SSFSC-1/2	0.500	1.000	0.438	M6*5	0.03
SSFSC-5/8	0.625	1.125	0.500	M6*6	0.04
SSFSC-3/4	0.750	1.250	0.563	M6*6	0.05
SSFSC-1	1.000	1.625	0.625	M6*6	0.10
SSFSC-1-1/4	1.250	2.000	0.688	M8*8	0.16
SSFSC-1-1/2	1.500	2.250	0.750	M8*8	0.21
SSFSC-1-3/4	1.750	2.750	0.875	M10*12	0.32
SSFSC-1-7/8	1.875	2.750	0.875	M10*12	0.35
SSFSC-2	2.000	3.000	0.875	M10*12	0.45

Bore Tolerances	
Bore	Tolerances
Upto 1"	+0.0005"
	+0.002"
1 1/8" to 2"	+0.0005
	-0.003

Width Tolerance	
All	Tolerances
All	+0.003"
	-0.010"