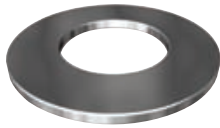




# Dimensions

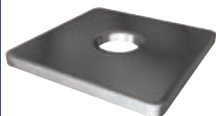
Round & Square Washers



## ROUND WASHER MILD STEEL (NEAREST STANDARD BS3410 & AS1237)

Part	Size	OD (mm)	ID (mm)	Thk (mm)	Carton	Pack	Pack Wgt (Kg)
WRMS?M06	M6	16.0	6.7	1.40	10000	500	0.83
WRMS?M08	M8	19.0	8.8	1.60	6000	500	1.28
WRMS?M10	M10	22.5	10.5	2.00	3000	500	2.40
WRMS?M12	M12	27.5	13.2	2.25	1600	200	1.72
WRMS?M16	M16	33.5	17.2	2.75	1200	200	2.96
WRMS?M20	M20	38.0	21.0	3.00	900	150	2.61
WRMS?M22	7/8"	46.5	23.5	3.00	400	50	1.58
WRMS?M24	M24	52.0	26.0	4.00	300	25	1.20
WRMS?M27	1 1/8"	62.0	31.0	4.00	300	25	1.30
WRMS?M30	M30	58.0	33.0	4.00	200	25	1.32
WRMS?M33	1 1/4"	63.0	35.0	4.00	150	25	1.58
WRMS?M36	M36	70.0	39.0	5.00	150	25	2.46
WRMS?M39	1 1/2"	77.0	41.0	5.00	120	10	1.36
WRMS?M42	M42	77.0	45.0	5.00	120	10	1.20
WRMS?M45	1 3/4"	90.0	45.0	6.00	80	10	1.96
WRMS?M48	M48	90.0	51.0	6.00	80	10	1.79
WRMS?M52	2"	100.0	54.0	6.00	60	10	2.46
WRMS?M56	M56	119.0	61.5	7.00	10	10	4.23
WRMS?M64	M64	125.0	69.5	7.00	10	10	4.00

Suitable for use with Metric & Imperial Commercial Grade Bolts



## METRIC SQUARE WASHER MILD STEEL HOBSON STANDARD

Part	Size	ID (mm)	Side Length (mm)	Thk (mm)	Pack	Pack Wgt (Kg)
WSMS?M10038030	M10	11.0	38	3	200	6.98
WSMS?M10050030	M10	11.0	50	3	200	10.00
WSMS?M12038030	M12	13.0	38	3	200	6.88
WSMS?M12050030	M12	13.0	50	3	200	9.95
WSMS?M12050050	M12	13.0	50	5	100	9.95
WSMS?M14050030	M14	14.5	50	3	100	9.15
WSMS?M16050050	M16	17.0	50	5	100	8.65
WSMS?M16065050	M16	17.0	65	5	100	15.00
WSMS?M20065050	M20	21.0	65	5	50	7.50
WSMS?M20075060	M20	21.0	75	6	50	15.00
WSMS?M24075060	M24	25.0	75	6	50	13.00